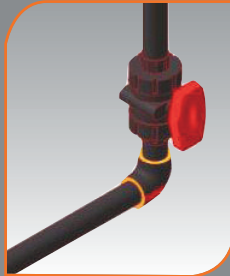
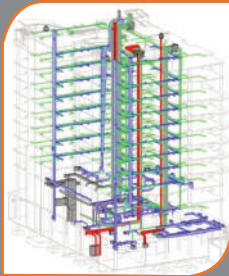


BIM

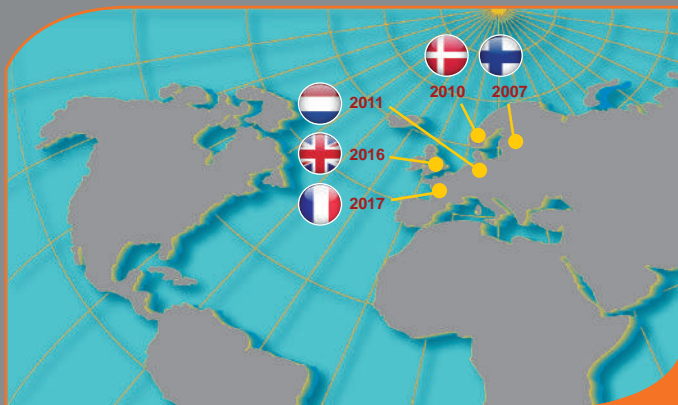
Building Information Modeling

WHAT IS BIM?

BIM is a collaborative process which gathers all stakeholders around a digital model containing a graphical representation in 2D or 3D of a building project, associated with a database.



WHEN?

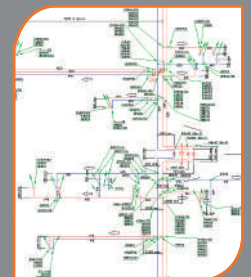


The European Directive "Government Procurement", which was adopted on 15th January 2014, implies that all 28 member states of the European Union will be able to encourage, require or demand, by 2016, the use of BIM for public building construction projects. The implementation of BIM will require the help of manufacturers, who will make their 3D product libraries available.

Since 1st January 2015, GIRPI provides its 3D library and produces execution drawings in REVIT format.

How can Girpi assist you further?

- **Technical Support:** product information, regulations, technical advice,
- **Production of execution drawings** (in: PDF, Autocad, Revit formats),
- **Production of take-offs / bills of materials** for the successful completion of the project,
 - analysis of, and solutions to, the expansion phenomenon
 - library of our ranges in REVIT Format
 - installation training courses



GIRPI - Rue Robert Ancel - CS 90133 - 76700 Harfleur - FRANCE
Tél : +33 2 32 79 60 00 - contact@girpi.fr - www.girpi.com
BIM contact in GIRPI: Patrick VATIN - pvatin@alixaxis.com

an *OAliaxis* company

